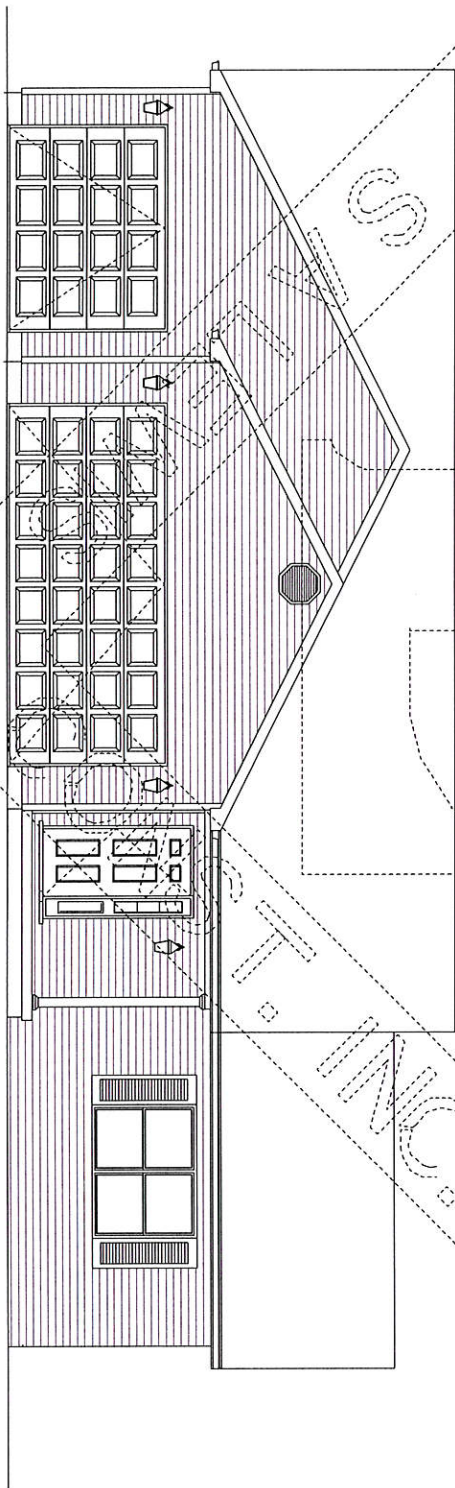


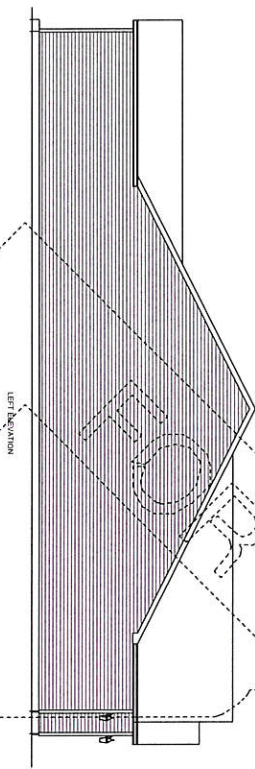


S.A. LEWIS CONSTRUCTION, INC.
 200 LEWIS PARK DRIVE
 MT. ZION, IL 62549

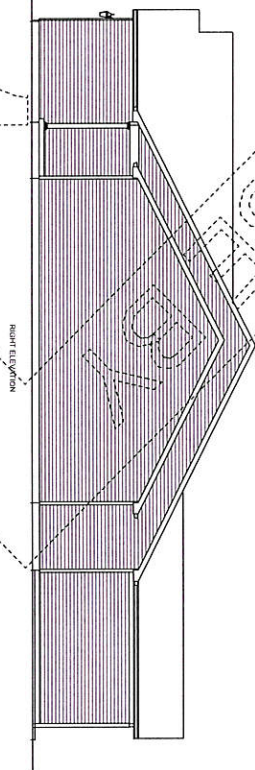
FRONT ELEVATION



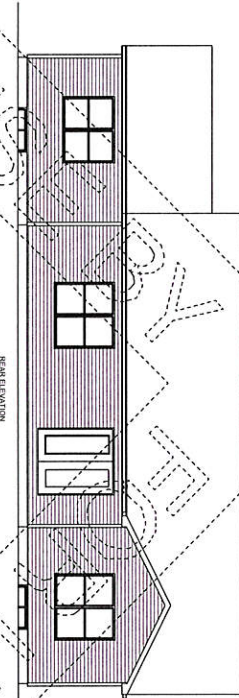
LEFT ELEVATION



RIGHT ELEVATION



REAR ELEVATION



IMPORTANT NOTE:
 THESE PLANS ARE OWNED BY S.A. LEWIS CONSTRUCTION INC.
 COPYRIGHT LAWS PREVENT ANYONE OTHER THAN
 S.A. LEWIS CONSTRUCTION FROM REPRODUCING, MODIFYING
 OR USING THESE PLANS OR ANY VARIATION OF THESE
 PLANS WITHOUT OUR WRITTEN CONSENT.



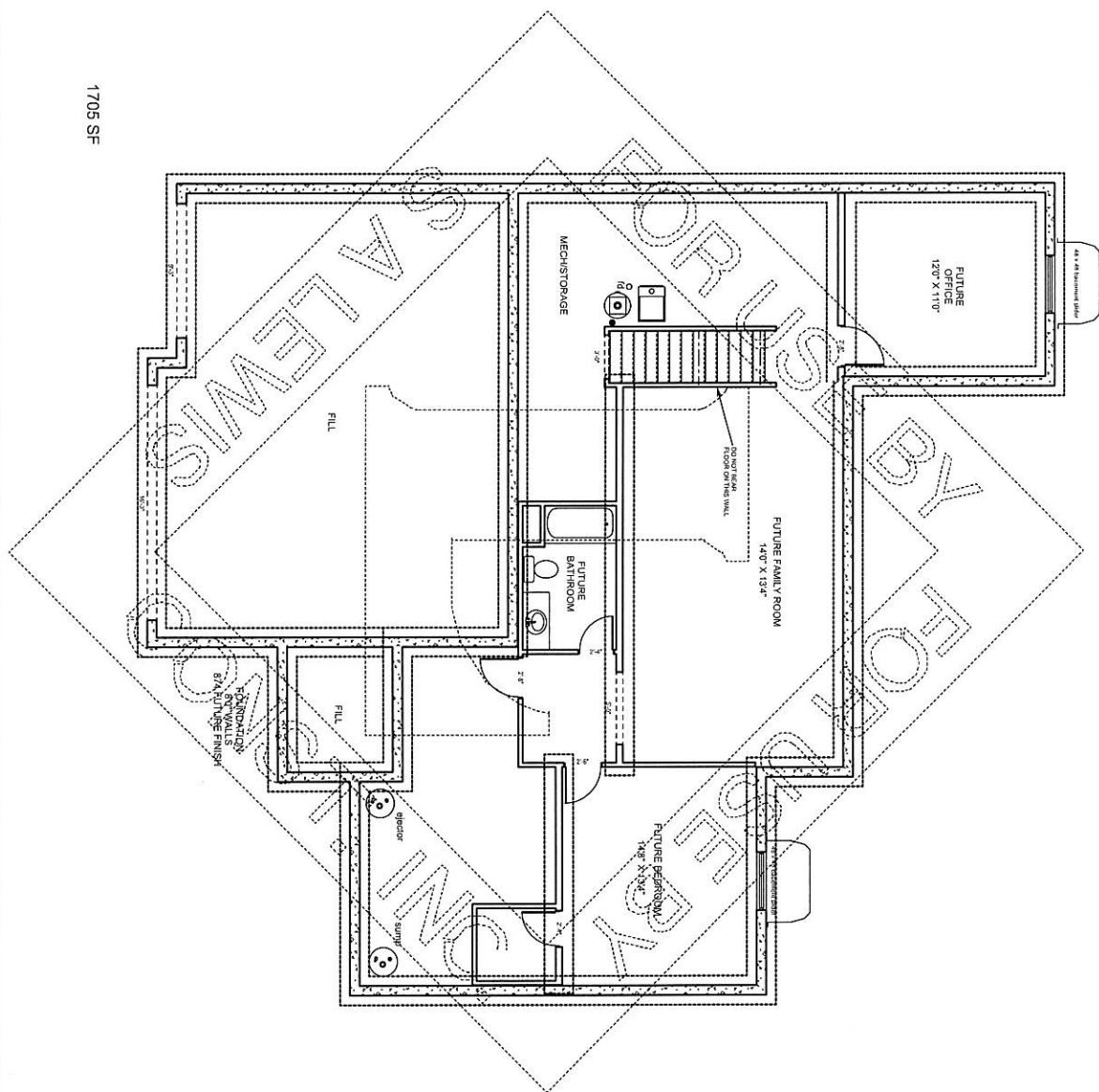
S.A. LEWIS CONSTRUCTION, INC.
 200 LEWIS PARK DRIVE
 MT. ZION, ILLINOIS 62549
 (217) 864-9086

| | | |
|--------------------|--------------|-------|
| DATE: | REVISION BY: | DATE: |
| SCALE 1/4" = 1'-0" | | |
| DRAWN BY: | | |



200 LEWIS PARK DRIVE
 HT. ZONING L 625.49

1705 SF



OF 3 SHEETS
 SHEET

NEW RESIDENCE FOR:
**PRESLEY
 PARKSIDE EAST
 2013**

IMPORTANT NOTE
 THESE PLANS ARE OWNED BY S.A. LEWIS CONSTRUCTION INC.
 COPYRIGHT LAWS PREVENT ANYONE OTHER THAN
 S.A. LEWIS CONSTRUCTION FROM REPRODUCING, MODIFYING
 OR USING THESE PLANS OR ANY VARIATION OF THESE
 PLANS WITHOUT OUR WRITTEN CONSENT.



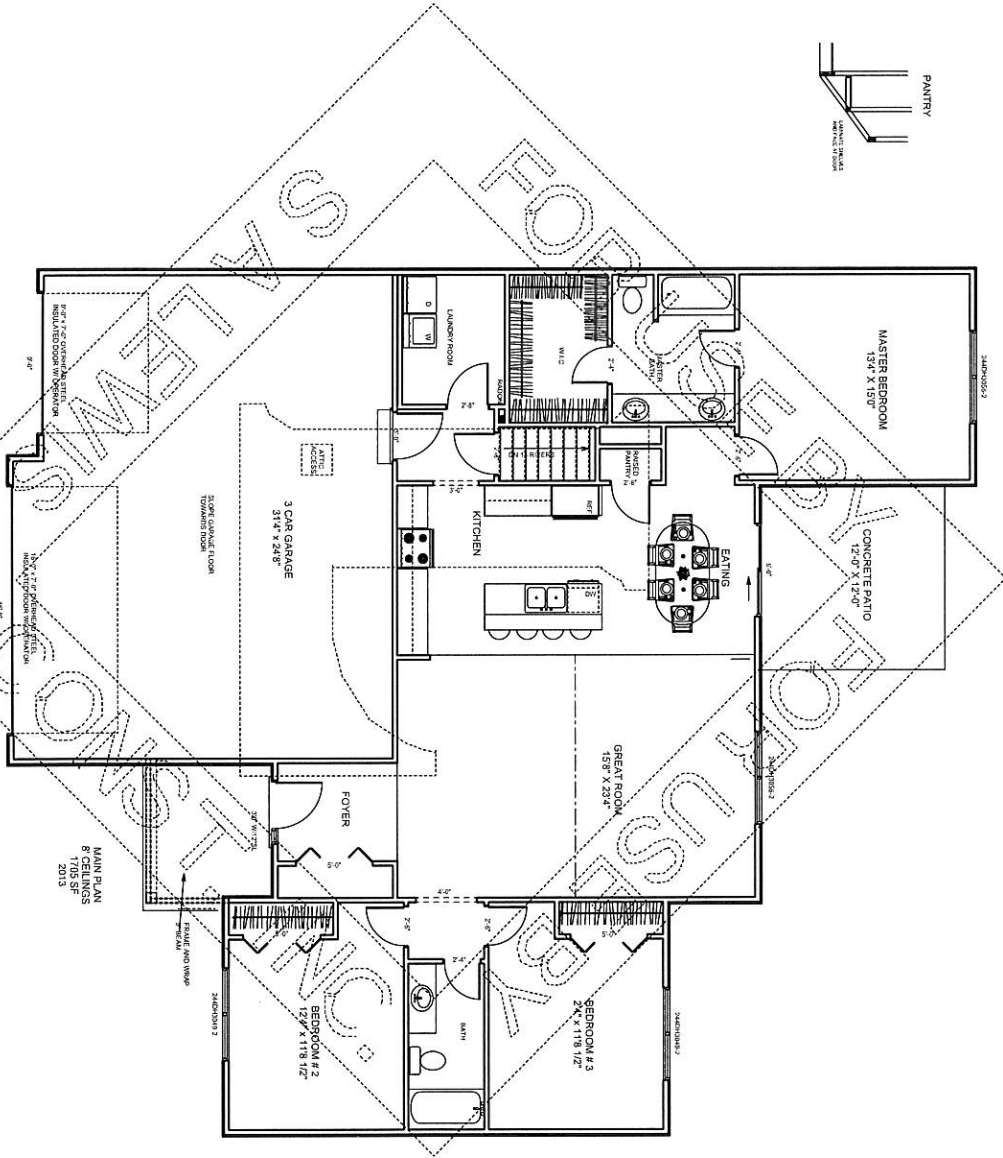
S.A. LEWIS CONSTRUCTION, INC.
 200 LEWIS PARK DRIVE
 HT. ZONING L 625.49
 (771) 844-5058

| DATE | REVISION BY | DATE |
|------|-------------|------|
| | | |
| | | |
| | | |
| | | |

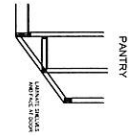
SCALE
 DRAWN BY



200 LEWIS PARK DRIVE
MT. ZION, IL 62549



MAIN PLAN
8' CELINGS
2013



OF 3 SHEETS

SHEET •

NEW RESIDENCE FOR:
**PRESLEY
PARKSIDE EAST
2013**

IMPORTANT NOTE
THESE PLANS ARE OWNED BY S.A. LEWIS CONSTRUCTION INC.
COPYRIGHT LAWS PREVENT ANYONE OTHER THAN
S.A. LEWIS CONSTRUCTION FROM REPRODUCING, COPYING
OR USING THESE PLANS OR ANY VARIATION OF THESE
PLANS WITHOUT OUR WRITTEN CONSENT.



S.A. LEWIS CONSTRUCTION, INC.

200 LEWIS PARK DRIVE
MT. ZION, ILLINOIS 62549
(618) 664-9016

| | | |
|----------|-------------|------|
| DATE | REVISION BY | DATE |
| SCALE | | |
| DRAWN BY | | |